

# 子宮頸細胞病理教學手冊

## 單元 1-1

### (下)

資料提供：台灣病理學會細胞委員會 / 劉之怡 醫師



台灣病理學會

TAIWAN SOCIETY OF PATHOLOGY

The Taiwan Division of the International Academy of Pathology

# 子宮頸細胞病理教學手冊

## 單元 1-1

Case presentation:

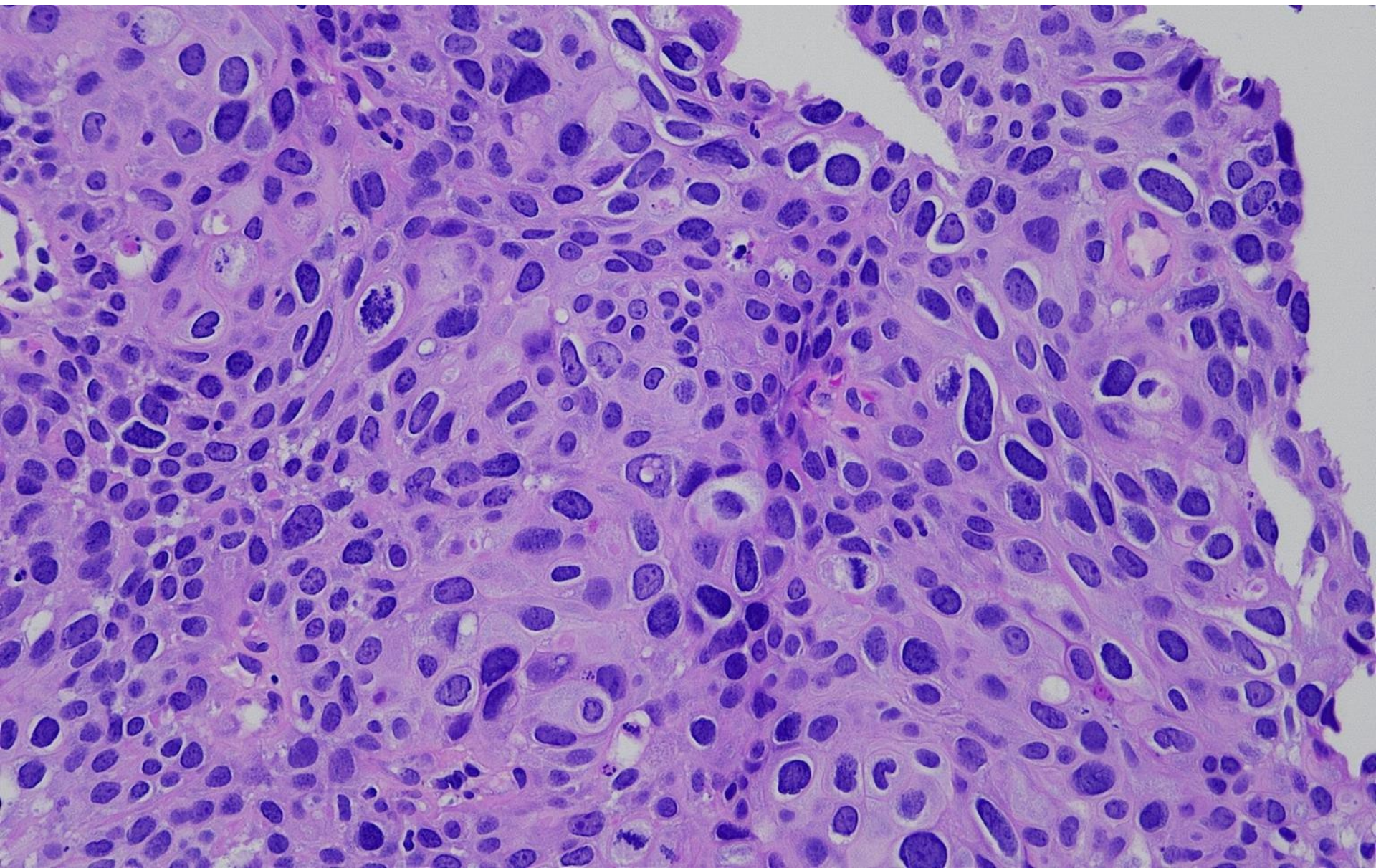
- Case #1-1: 46 y/o female patient
- Cervix biopsy

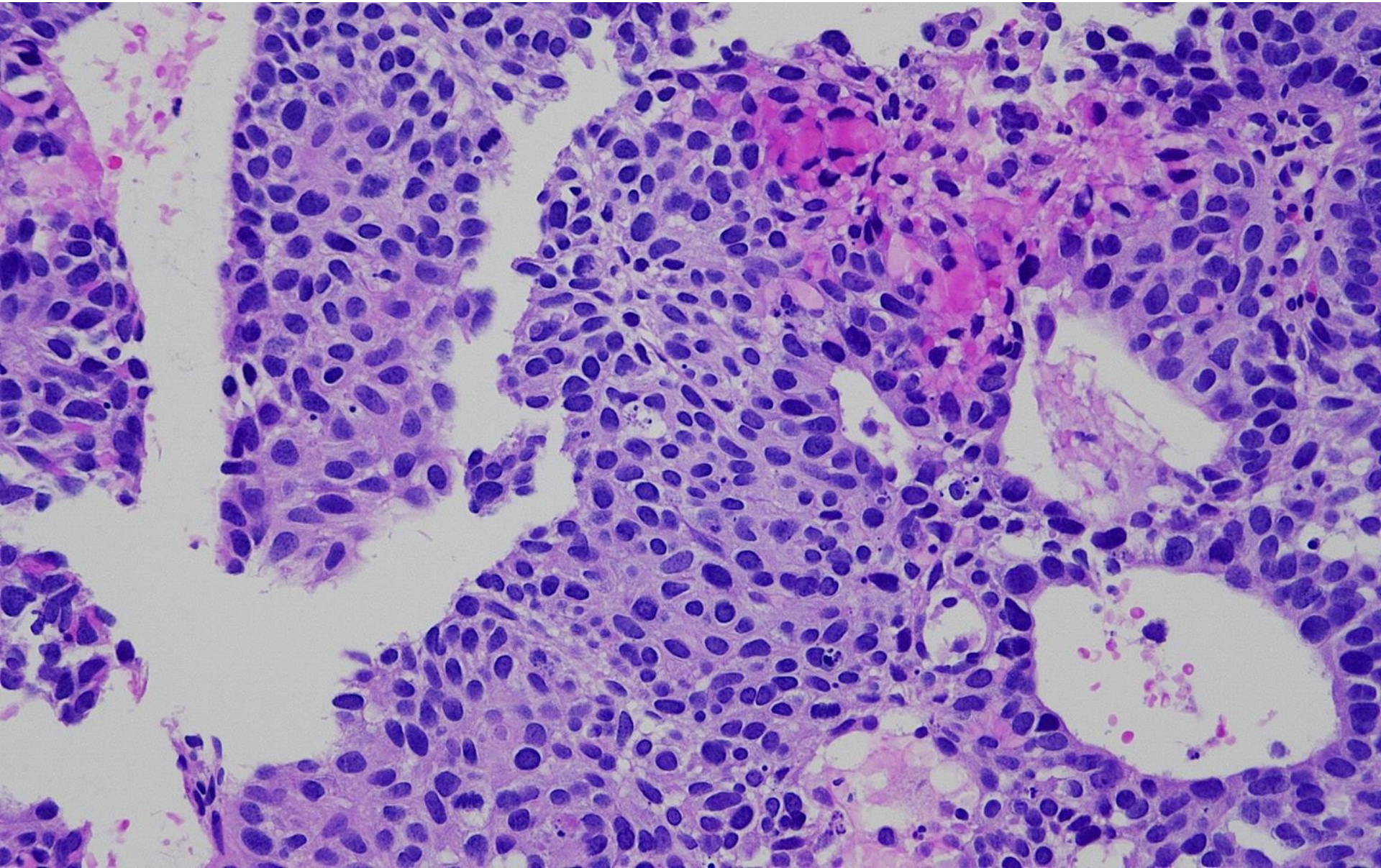


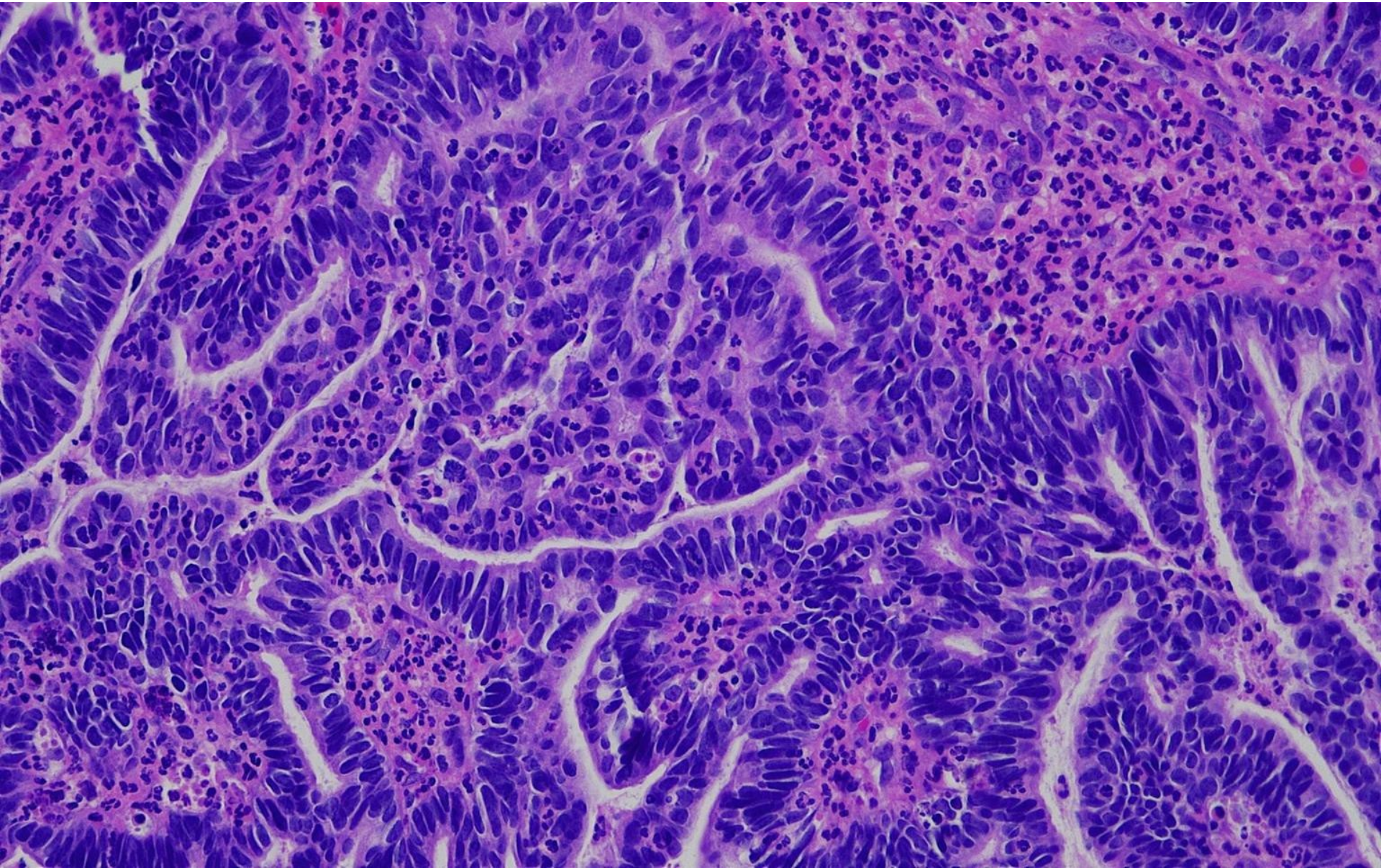
台灣病理學會

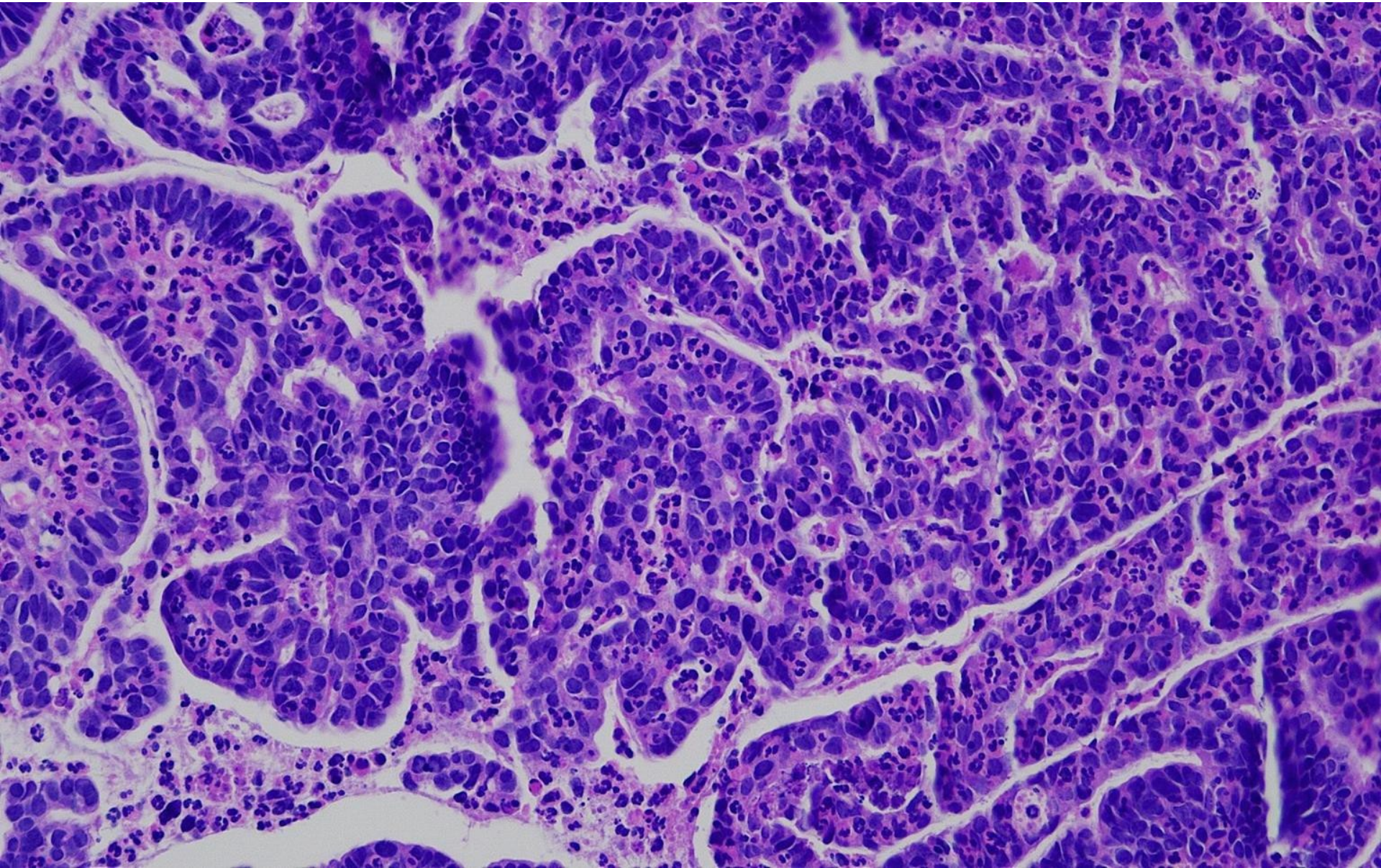
TAIWAN SOCIETY OF PATHOLOGY

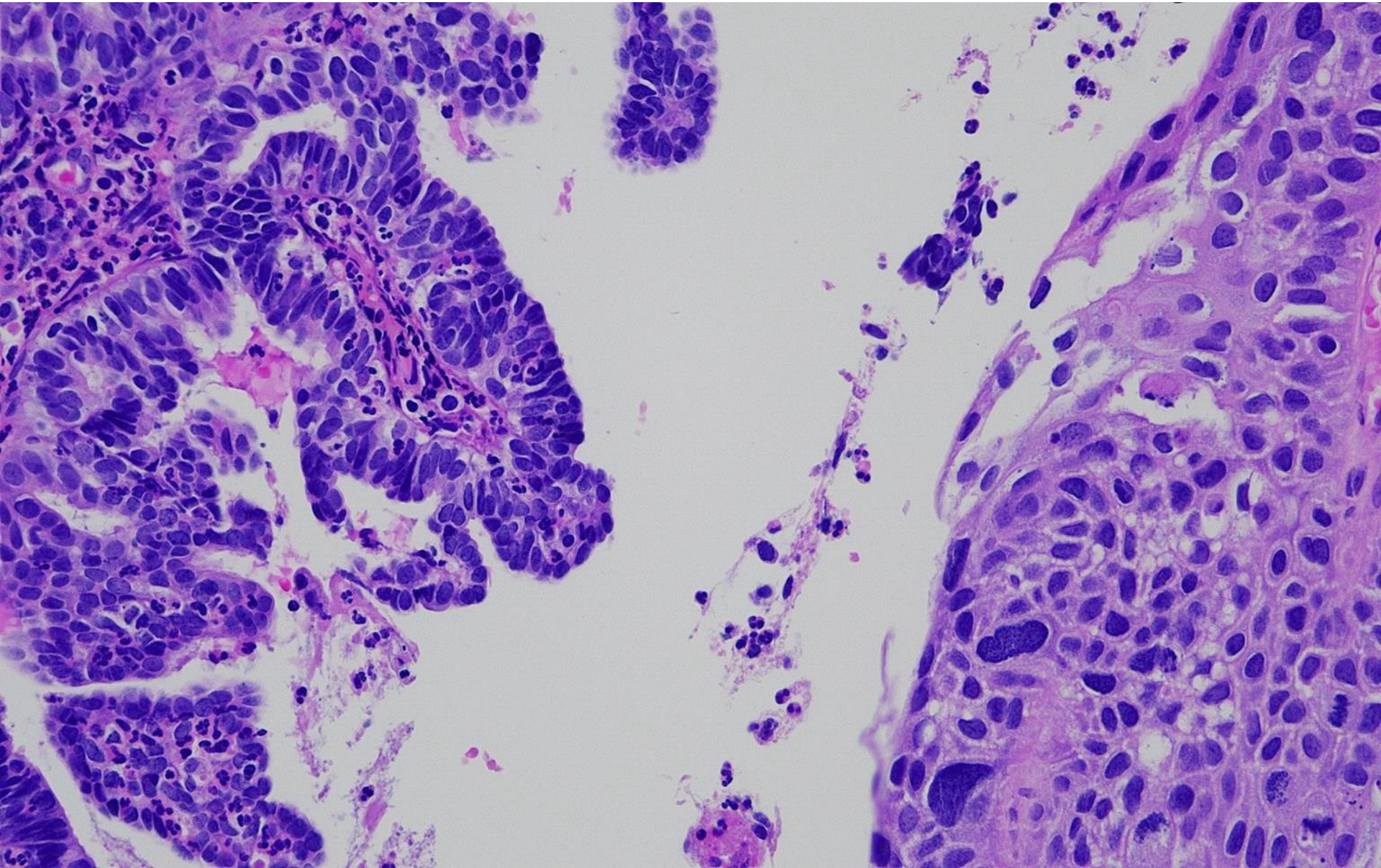
The Taiwan Division of the International Academy of Pathology











# 子宮頸細胞病理教學手冊

## 單元 1-1

Final Diagnosis (radical trachelectomy):

**Adenocarcinoma and microinvasive  
squamous cell carcinoma**

# 子宮頸細胞病理教學手冊

## 單元 1-1

**Hyperchromatic Crowded Group Pattern in  
Cervical Smear**

# Hyperchromatic Crowded Group Pattern

1. Reparative Changes (Repair)
2. Reactive Endocervical Cells
3. Benign Endometrial Cells
4. Atrophy
5. Tubal Metaplasia
6. Adenocarcinoma In Situ
7. Endocervical Adenocarcinoma
8. Endometrial Adenocarcinoma
9. High-Grade Squamous Intraepithelial Lesion
10. Nonkeratinizing Squamous Cell Carcinoma

# KEY FEATURES of High-Grade Squamous Intraepithelial Lesion

- The lesional cells have scant cytoplasm and high N/C ratios.
- Nuclei are hyperchromatic and contain coarse chromatin with variable nuclear size and shape.
- Nuclear membranes are irregular with prominent indentations.
- Cells can be distributed singly, form sheets, or syncytial aggregates.

# KEY FEATURES of Nonkeratinizing Squamous Cell Carcinoma

- Hyperchromatic crowded groups contain malignant cells with prominent nucleoli and/or unevenly distributed, coarse chromatin.
- The malignant cells are pleomorphic and have dense, squamous cytoplasm and/or high N/C ratios (basaloid appearance).
- Tumor diathesis (necrotic debris) may be present as “clinging diathesis” in liquid-based preparations (necrotic debris adherent to cells).
- HCG contain cells with prominent nucleoli and/or irregular chromatin distribution.

# KEY FEATURES of Adenocarcinoma In Situ

- Columnar cells can be present in sheets, strips, or rosette formations.
- Nuclei are often irregularly stratified between adjacent cells (“pseudostratified” appearance), crowded, and overlapping.
- Nuclei are enlarged and display hyperchromasia with powdery or coarse chromatin.
- Nuclei may project out (“feather”) from fragment edges.
- The cells have round to oval nuclei and small/inconspicuous nucleoli.
- Mitoses and apoptosis may be seen

# KEY FEATURES of Endocervical Adenocarcinoma

- Abnormal cells are often present in three-dimensional structures and/or singly dispersed.
- Nuclei are crowded, overlapping, enlarged, and hyperchromatic with coarse chromatin and prominent nucleoli.
- Nuclear pleomorphism and nuclear membrane irregularities increase with grading.
- Clinging diathesis is indicative of invasion and is characterized by necrotic debris attached to the periphery of a group of malignant cells.

# KEY FEATURES of Endometrial Adenocarcinoma

- Necrotic granular debris may be present in the background, indicating an invasive process, also known as diathesis.
- The malignant cells may form three-dimensional clusters.
- Vacuolated cytoplasm may be scant or abundant.
- Nuclei are enlarged and hyperchromatic with coarse chromatin; nuclear pleomorphism increases with nuclear grade.
- Cytoplasmic neutrophils may be indicative of an

# 子宮頸細胞病理教學手冊

## 單元 1-1

### References:

1. VandenBussche, C. J., Rodriguez, E. F., Allison, D. B., & Zhang, M. L. (2020). Atlas of cytopathology: A pattern based approach.
2. Nayar, R., & Wilbur, D. C. (2015). The Bethesda system for reporting cervical cytology: Definitions, criteria, and explanatory notes.
3. Levine, T., Vielh, P., Kardum-Skelin, I., Gray, W., & Kocjan, G. (2013). Diagnostic Cytopathology Essentials: Expert Consult: Online and Print. Elsevier.
4. Jiménez-Ayala, M., & Jiménez-Ayala, P. B. (2011). Cytopathology of the glandular lesions of the female genital tract. Basel: S. Karger.