

子宮頸細胞病理教學手冊

單元 1-2

(上)

資料提供：台灣病理學會細胞委員會 / 劉之怡 醫師



台灣病理學會

TAIWAN SOCIETY OF PATHOLOGY

The Taiwan Division of the International Academy of Pathology

子宮頸細胞病理教學手冊

單元 1-2

Case presentation:

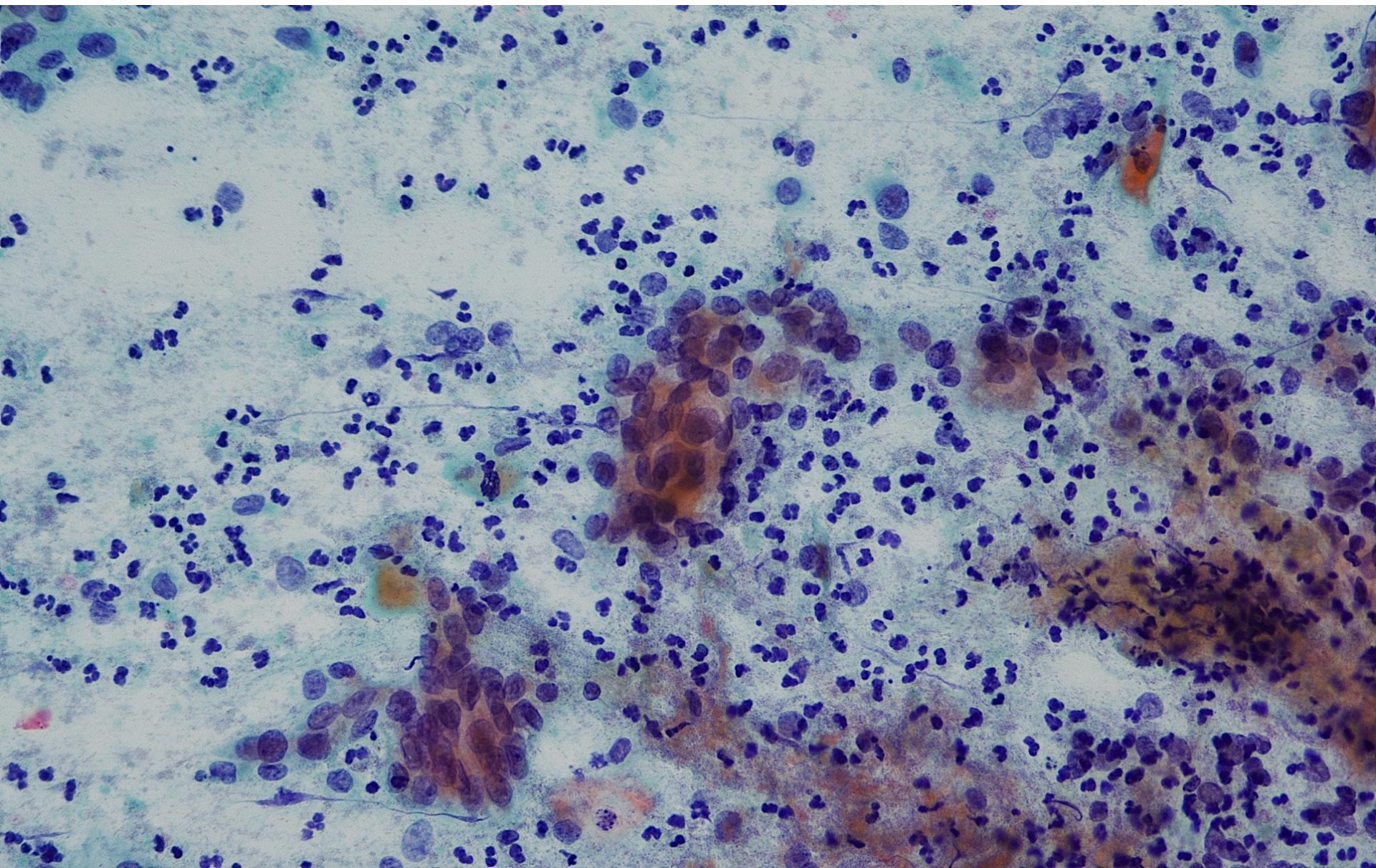
- Case #1-2: 54 y/o female patient
- Pap smear

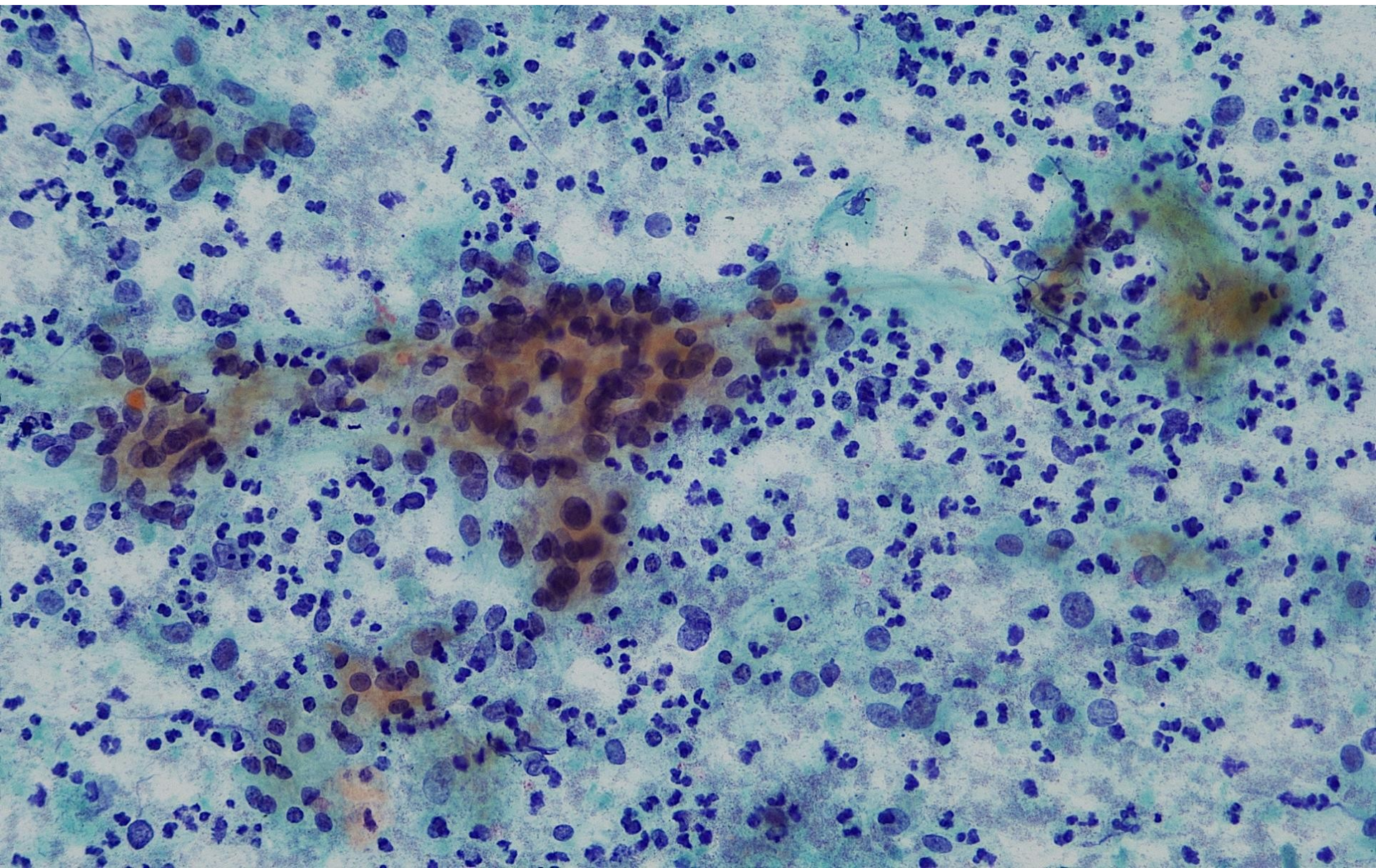


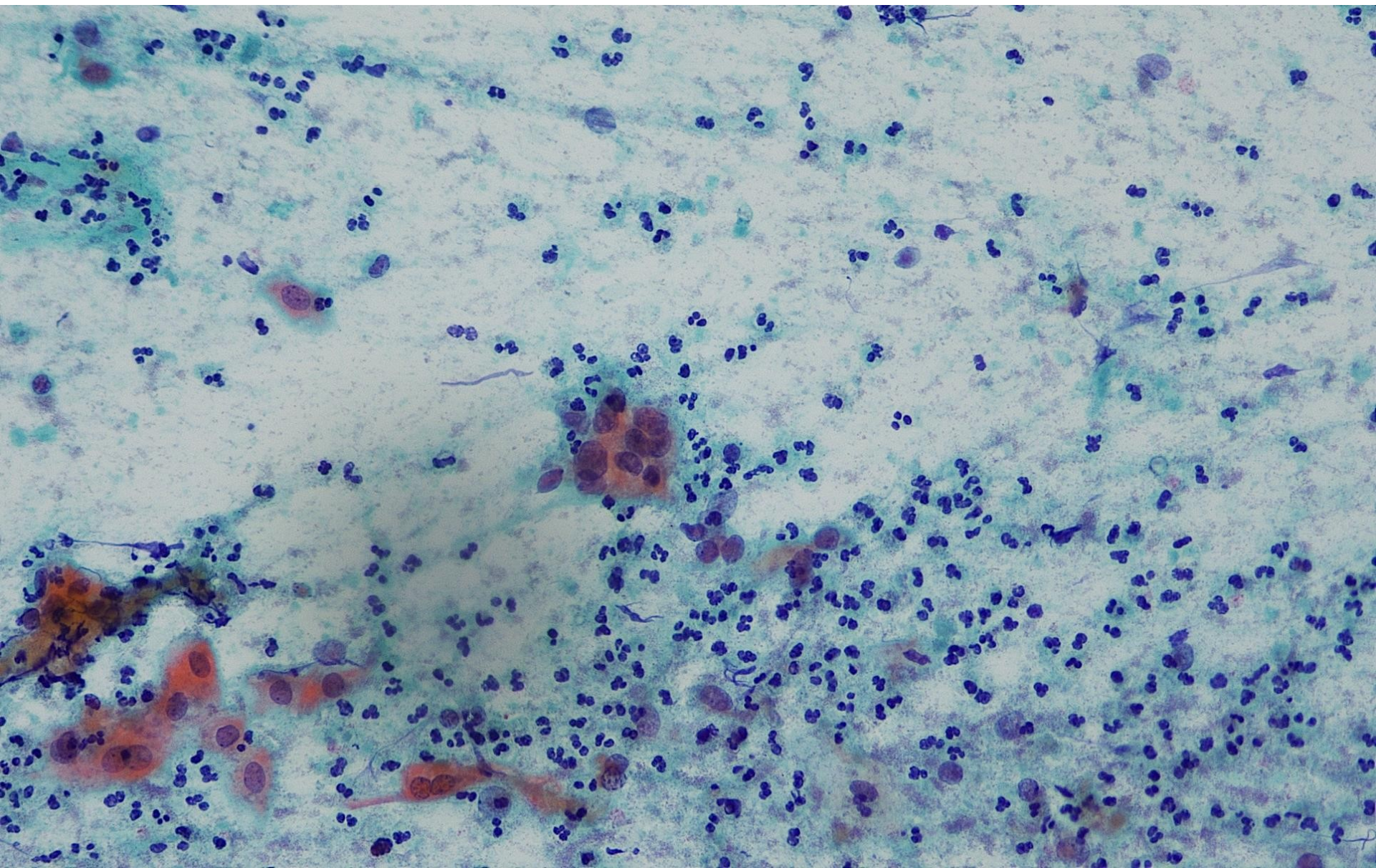
台灣病理學會

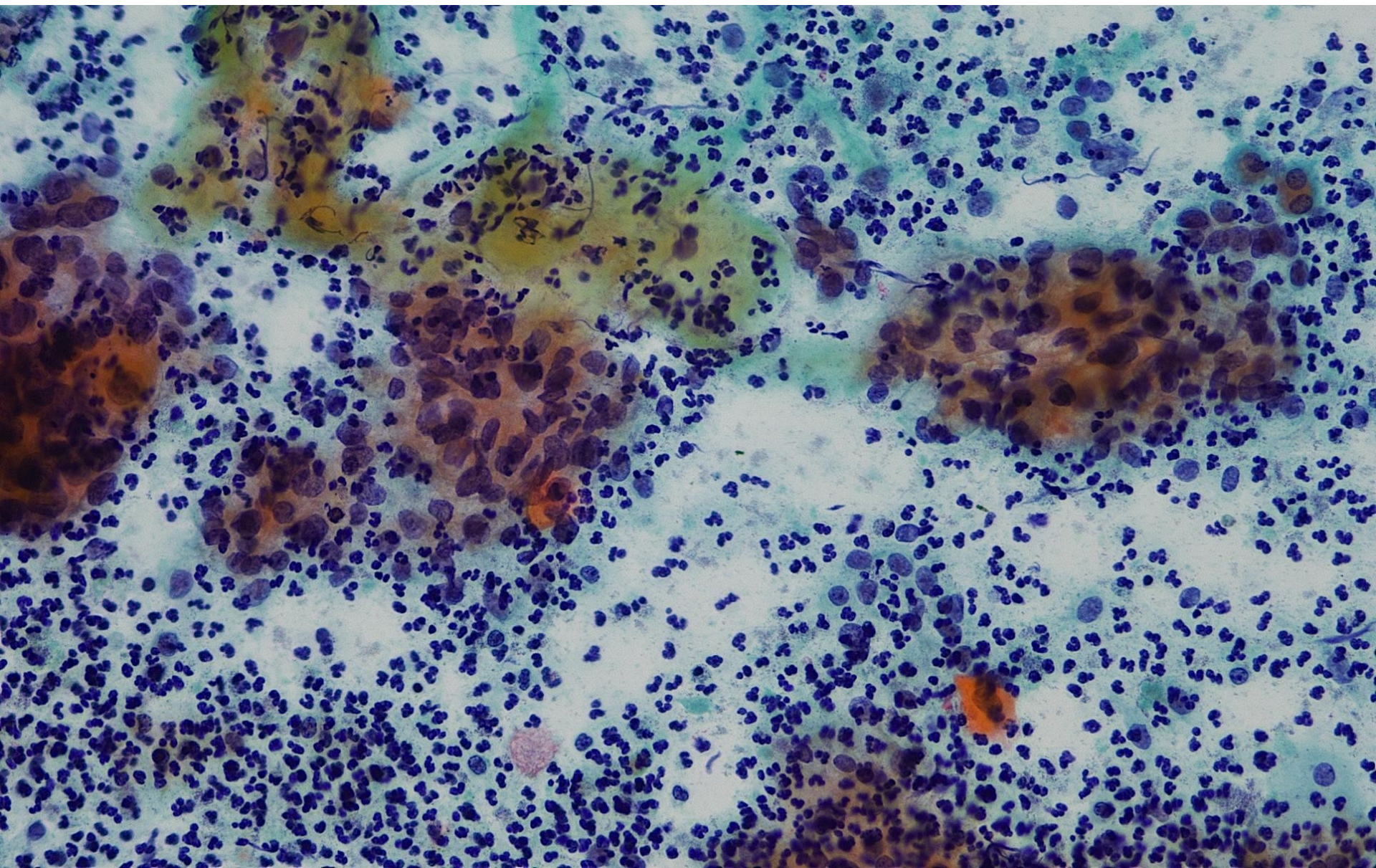
TAIWAN SOCIETY OF PATHOLOGY

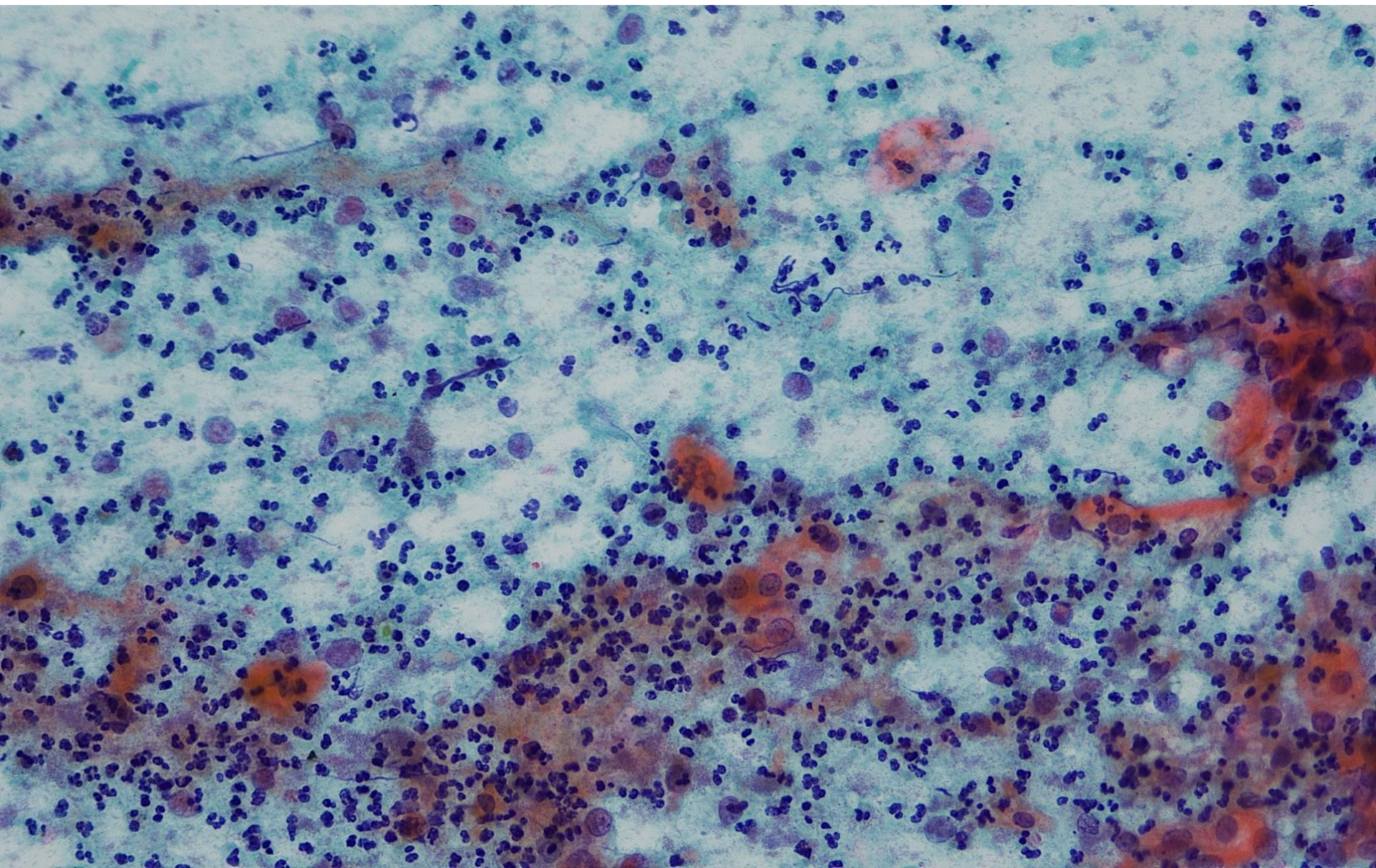
The Taiwan Division of the International Academy of Pathology

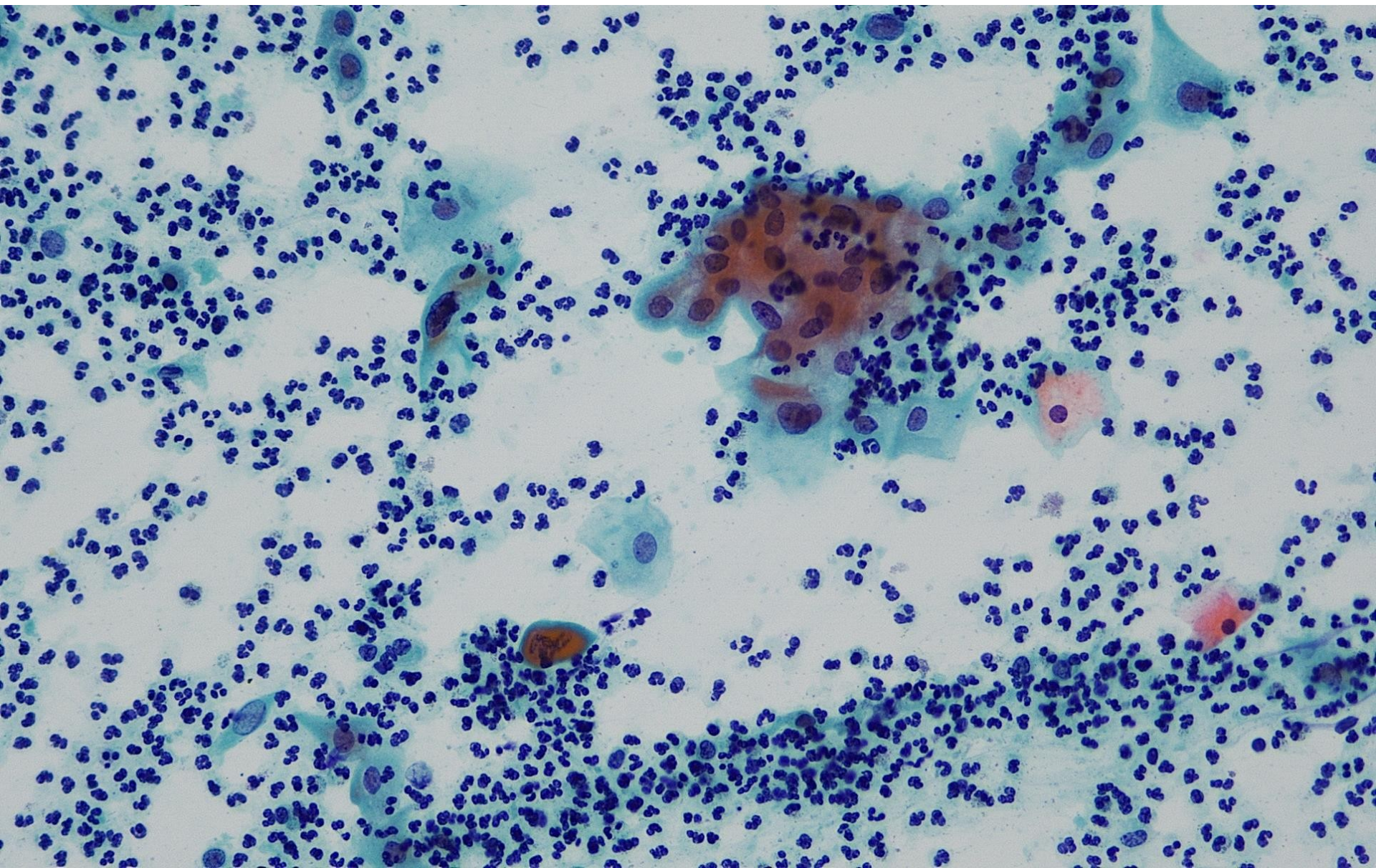












子宮頸細胞病理教學手冊

單元 1-2

Based on cytomorphology, what is the most likely diagnosis:

請由此連結作答：

- Adenocarcinoma
- Squamous cell carcinoma
- High-grade SIL
- Adenocarcinoma and high-grade SIL
- Adenosquamous carcinoma
- Other: